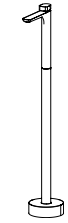
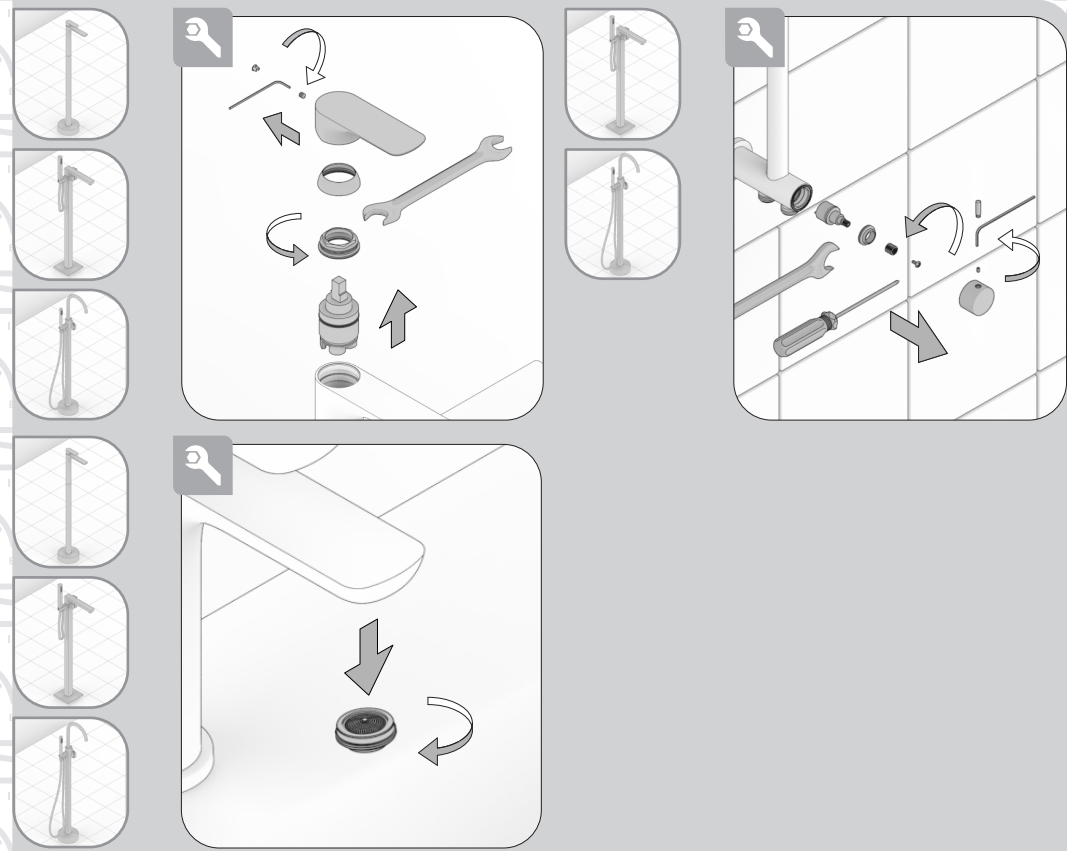
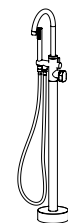
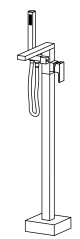


ISTRUZIONI DI MONTAGGIO INSTALLATION INSTRUCTIONS INSTRUCTIONS DE MONTAGE



MISCELATORE MONOCOMANDO PER LAVABO A PAVIMENTO
FLOOR MOUNTED WASH-BASIN MIXER
MITIGEUR POUR LAVABO SUR PIED



MISCELATORE MONOCOMANDO PER VASCA A PAVIMENTO
FLOOR MOUNTED BATH MIXER
MITIGEUR POUR BAIN SUR PIED

VALIDO PER TUTTO IL PROGRAMMA ARTIS

VALID FOR THE WHOLE ARTIS PROGRAM

VALABLE POUR TOUT LE PROGRAM ARTIS

| | | | | | | |
|----------------------------------|---------------------------|------------------------------|-------------------------|--|--|---|
| | | | | | | |
| PULIZIA CLEANING NETTOYAGE | SAPONE SOAP SAVON ✓ | SPUGNA SPONGE ÉPONGE ✓ | ACQUA WATER EAU ✓ | MICROFIBRA MICROFIBER MICROFIBRE ✓ | SPUGNA ABRASIVA STEEL WOOL ÉPONGE ABRASIVE ✗ | DETERGENTI DETERGENT DETERGENTS ✗ |

OK
3 Bar - 45 psi

MIN. 1 Bar
14.5 psi

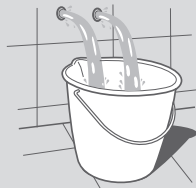
MAX. 5 Bar
75 psi

°C

MAX 80°C - 175°F

OK 65°C-150°F

MIN 15°C-60°F



Eseguire il lavaggio della tubazione come suggerisce la normativa DIN 1988 / EN 1717.

To complete the installation flush out both hot and cold water supply.

Rincer l'installation complete conformément à la réglementation et aux normes.

Informazioni
Informations
Informations

Manutenzione
Maintenance
Entretien

Prestare attenzione
Pay attention
Prêter attention

Installazione corretta
Correct installation
Montage correcte

