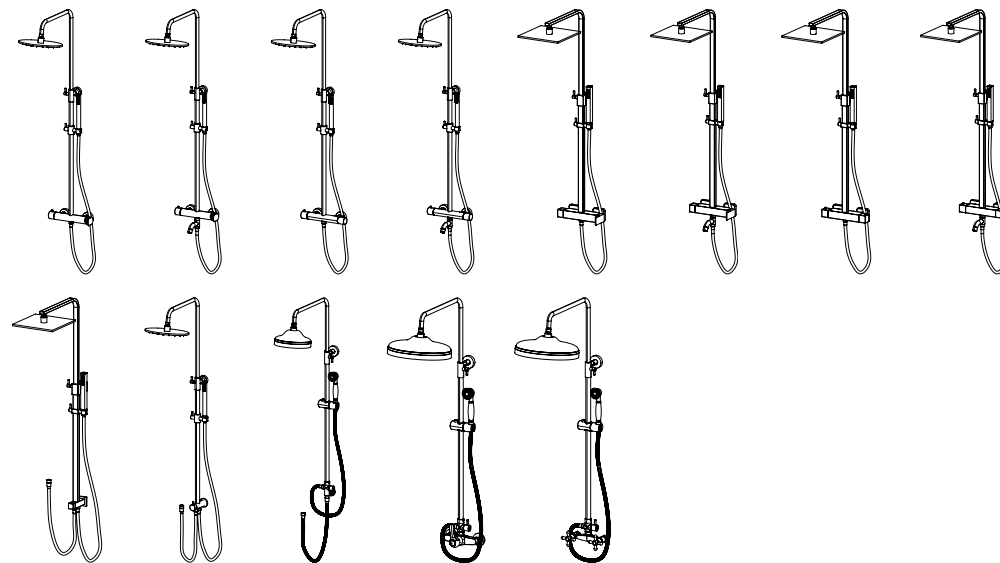
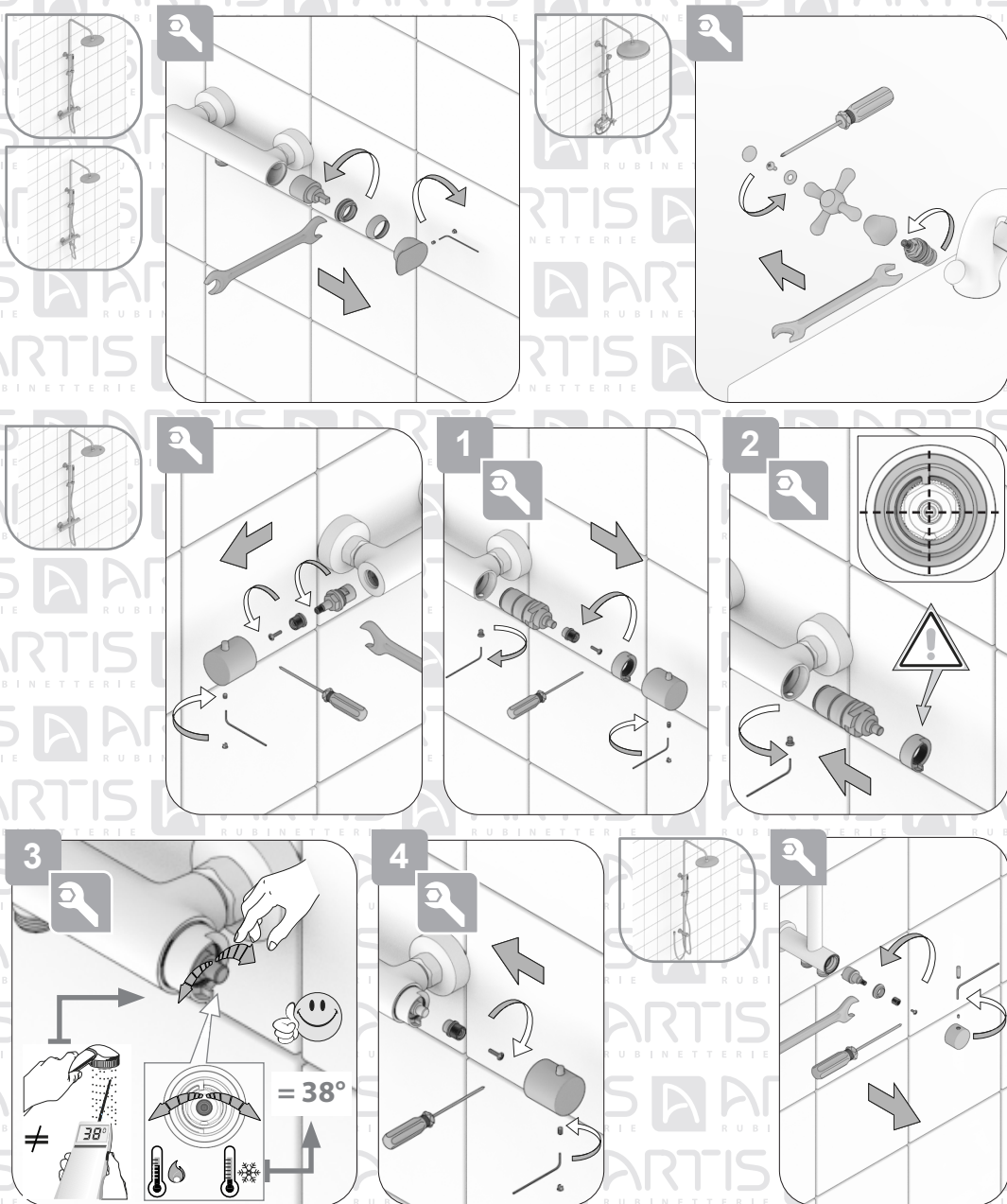


ISTRUZIONI DI MONTAGGIO
COLONNA DOCCIA TELESCOPICA

INSTALLATION INSTRUCTIONS
TELESCOPIC SHOWER COLUMN

INSTRUCTIONS DE MONTAGE
COLONNE DE DOUCHE TÉLESCOPIQUE



VALIDO PER TUTTO IL PROGRAMMA ARTIS

VALID FOR THE WHOLE ARTIS PROGRAM

VALABLE POUR TOUT LE PROGRAM ARTIS

PULIZIA CLEANING NETTOYAGE	SAPONE SOAP SAVON ✓	SPUGNA SPONGE ÉPONGE ✓	ACQUA WATER EAU ✓	MICROFIBRA MICROFIBER MICROFIBRE ✓	SPUGNA ABRASIVA STEEL WOOL ÉPONGE ABRASIVE ✗	DETERGENTI DETERGENT DETERGENTS ✗

OK
3 Bar - 45 psi

MIN. 1 Bar
14.5 psi

MAX. 5 Bar
75 psi


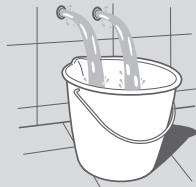



°C

— MAX 80°C - 175°F

— OK 65°C-150°F

— MIN 15°C-60°F

Eseguire il lavaggio della tubazione come suggerisce la normativa DIN 1988 / EN 1717.

To complete the installation flush out both hot and cold water supply.

Rincer l'installation complete conformément à la réglementation et aux normes.



Informazioni
Informations
Informations



Manutenzione
Maintenance
Entretien



Prestate attenzione
Pay attention
Prêter attention



Installazione corretta
Correct installation
Montage correcte

