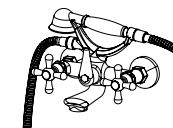
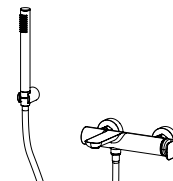
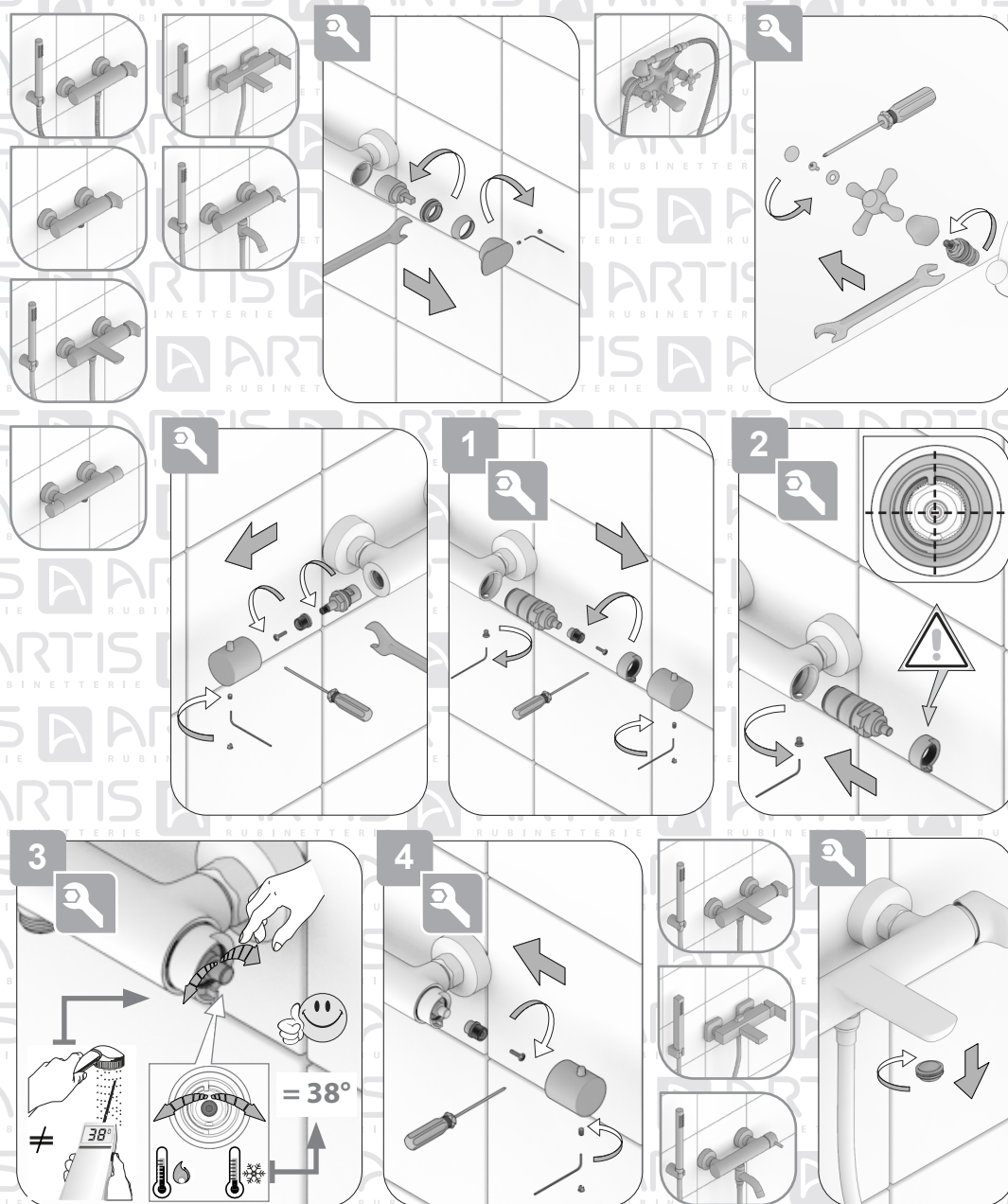
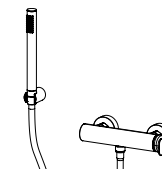
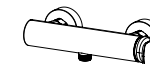


ISTRUZIONI DI MONTAGGIO INSTALLATION INSTRUCTIONS INSTRUCTIONS DE MONTAGE



MISCELATORE PER VASCA ESTERNO
EXTERNAL BATH MIXER
MITIGEUR BAIN DOUCHE EXTERIEUR

MISCELATORE PER DOCCIA ESTERNO
EXTERNAL SHOWER MIXER
MITIGEUR DOUCHE EXTERIEUR



MISCELATORE TERMOSTATICO PER DOCCIA ESTERNO
EXTERNAL THERMOSTATIC SHOWER MIXER
MITIGEUR THERMOSTATIQUE EXTERIEUR POUR DOUCHE



VALIDO PER TUTTO IL PROGRAMMA ARTIS
VALID FOR THE WHOLE ARTIS PROGRAM
VALABLE POUR TOUT LE PROGRAM ARTIS

PULIZIA CLEANING NETTOYAGE	SAPONE SOAP SAVON ✓	SPUGNA SPONGE ÉPONGE ✓	ACQUA WATER EAU ✓	MICROFIBRA MICROFIBER MICROFIBRE ✓	SPUGNA ABRASIVA STEEL WOOL ÉPONGE ABRASIVE ✗	DETERGENTI DETERGENT DETERGENTS ✗

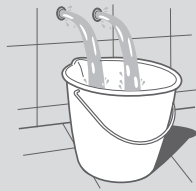
OK
3 Bar - 45 psi

MIN. 1 Bar
14.5 psi

MAX. 5 Bar
75 psi



— MAX 80°C - 175°F
— OK 65°C-150°F
— MIN 15°C-60°F



Eseguire il lavaggio della tubazione come suggerisce la normativa DIN 1988 / EN 1717.
To complete the installation flush out both hot and cold water supply.
Rincer l'installation complete conformément à la réglementation et aux normes.



Informazioni
Informations
Informations



Manutenzione
Maintenance
Entretien



Prestare attenzione
Pay attention
Prêter attention



Installazione corretta
Correct installation
Montage correcte

Altezze consigliate
Recommended heights
Hauteurs recommandées

1

1

2

3

4

5